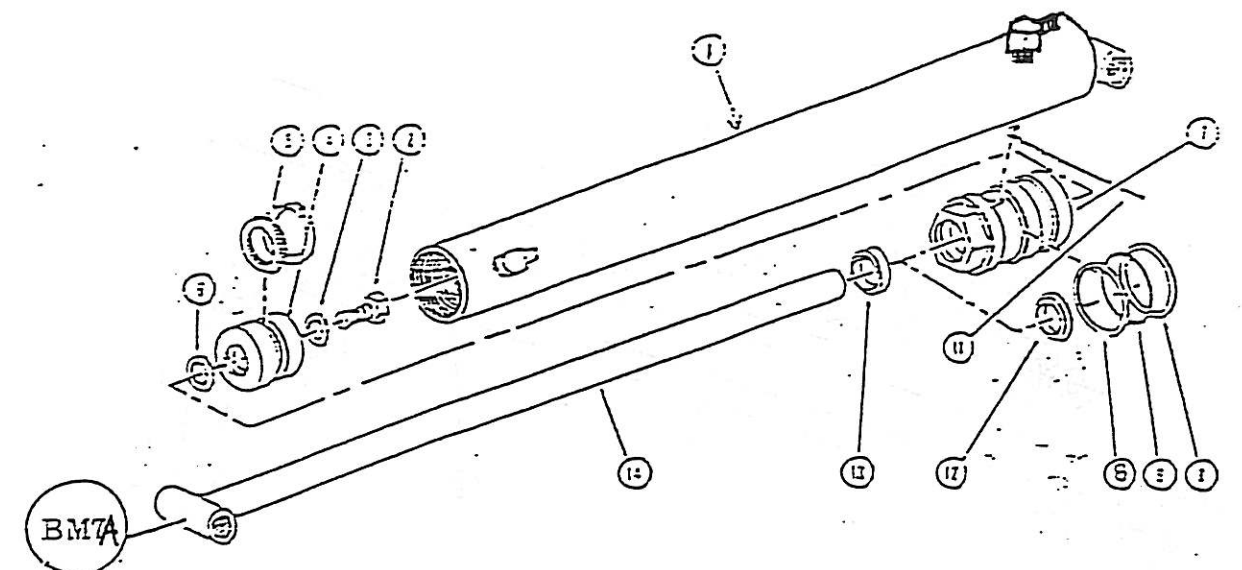


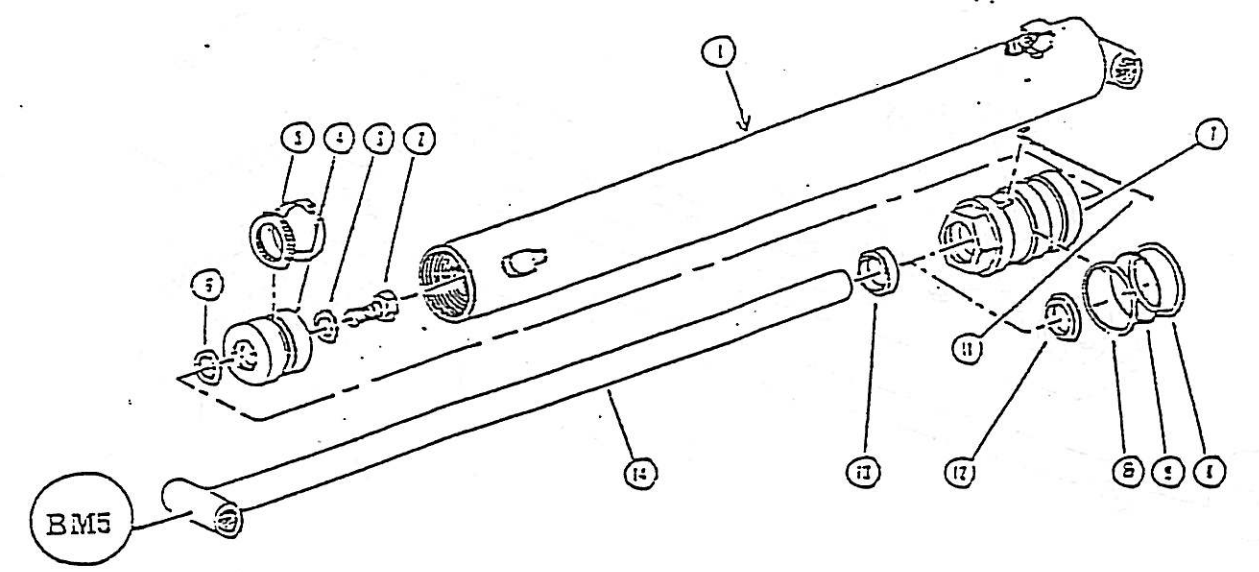
RACINE SIX SECTION VALVE

ILL. NO.	QTY.	PART NO.	DESCRIPTION	ILL. NO.	QTY.	PART NO.	DESCRIPTION
1	2	785038	#10 S.A.E. Plug Assembly	30	1	406460	O'Ring
2	1	254009	Outlet Manifold Section With #10	31	1	490975	Back-up Ring
3	5	254006	Valve Section With #8 Openings	32	1	405688	O'Ring
4	6	255002	Female Spool End	33	1	255049	Power Beyond Sleeve
5	1	254016	Inlet Manifold Section With #10	34	1	405393	O'Ring
6	1	785056	Relief Valve Cartridge	35	1	355099	#8 Plug
7	1	410502	Snap Ring	36	12	490308	O'Ring
8	1	490963	Back-up Ring	37	6	405895	O'Ring
9	1	493785	Spring	38	12	401248	O'Ring
10	1	407229	Seat O'Ring	39	6	406127	O'Ring
11	1	255095	Poppet	40	6	255021	Load Check Piston
12	1	493850	Spring	41	6	410520	Spring
13	1	255145	Spring Seat	42	6	405688	O'Ring
14	1	401009	Jam Nut	43	6	255020	Plug
15	1	410540	Adjustment Screw	44	6	785011	Load Check Assembly
16	1	255146	Cartridge Body	45	6	401033	Tie Rod Nut
17	1	401273	Spring Seat O'Ring	46	6	400908	Tie Rod Lockwasher
18	1	255042	Cartridge Body	47	3	255162	Tie Rod
19	1	255040	Seat	48	1	981122	Boon Section W/Float Position
20	2	405393	Cartridge Body O'Ring	49	1	254242	Valve Body
21	1	255041	Piston	50	1	255257	Spool, Float
22	1	406484	O'Ring	51	1	255258	Spring Retainer
23	12	400905	Lockwasher	52	1	255305	Spool End, Float
24	12	401603	Screw	53	1	401072	Ball, Detent
25	6	255035	Spool End	54	2	410560	Spring, Detent
26	6	255034	Spacer	55	2	402964	Screw, Allen Head
27	6	254000	Cover	56	2	254235	Lower Extension
28	11	255013	Spring Retainer	57	2	410540	Screw, Allen Head
29	6	410512	Spring	58	2	401032	Nut



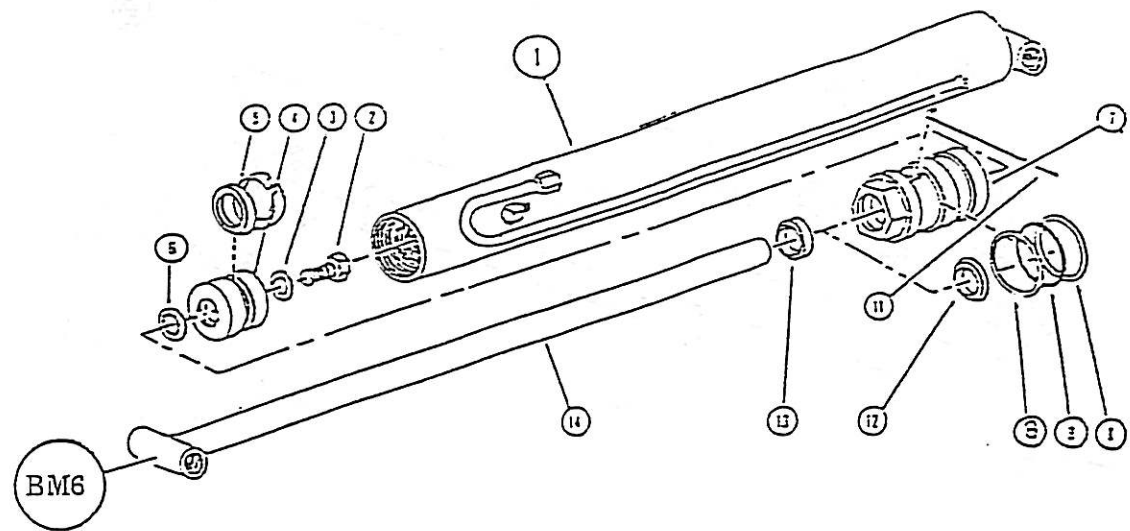
BCY 12823 Dipper Cylinder 2-1/2" x 14"

ILL. NO.	QTY.	PART NO.	DESCRIPTION	ILL. NO.	QTY.	PART NO.	DESCRIPTION
1	1	SCY12826	BARREL ASSEMBLY	8*	2	SCY1070	BACK-UP RINGS
2	1	SBT1017	CAPSCREW, 7/8"	9*	1	SCY1024	O'RING
3*	1	SCY1018	DYNA SEAL, 7/8"	11*	1	SCY1036	LOCKWIRE
4	1	SCY1020	PISTON	12*	1	SCY1025	ROD SEAL
5*	1	SCY1019	PISTON SEAL	13*	1	SCY1027	ROD WIPER
6*	1	SWS245	INTERNAL LOCKWASHER	14	1	SCY10709	ROD ASSEMBLY
7	1	SCY1023	CYLINDER HEAD		1	SCY1030	SEAL KIT



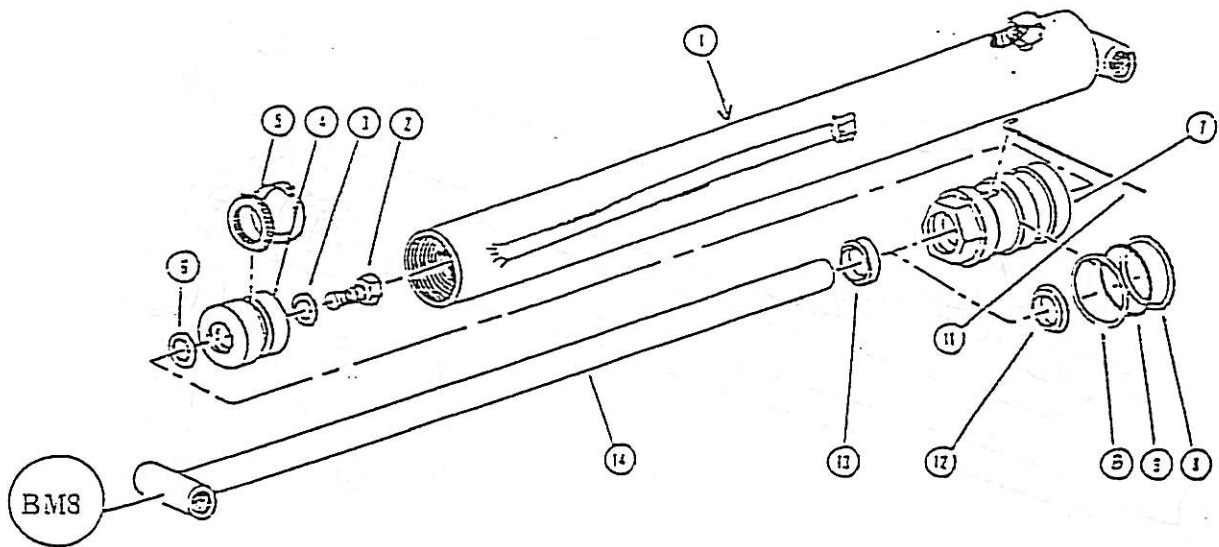
BCY 12687 Stabilizer Cylinder 2 1/2" x 10"

ILL. NO.	QTY.	PART NO.	DESCRIPTION	ILL. NO.	QTY.	PART NO.	DESCRIPTION
1	1	SCY12710	BARREL ASSEMBLY	8*	2	SCY1070	BACK-UP RINGS
	1	SBT1017	CAPSCREW, 7/8"	9*	1	SCY1024	O'RING
	1	SCY1018	DYNA SEAL, 7/8"	11*	1	SCY1036	LOCKWIRE
4	1	SCY1020	PISTON	12*	1	SCY1025	ROD SEAL
5*	1	SCY1019	PISTON SEAL	13*	1	SCY1027	ROD WIPER
6*	1	SWS245	INTERNAL LOCKWASHER	14	1	SCY12711	ROD ASSEMBLY
7	1	SCY1023	CYLINDER HEAD		1	SCY1030	SEAL KIT



BCY 12684 BOOM Cylinder 2 1/2" x 20"

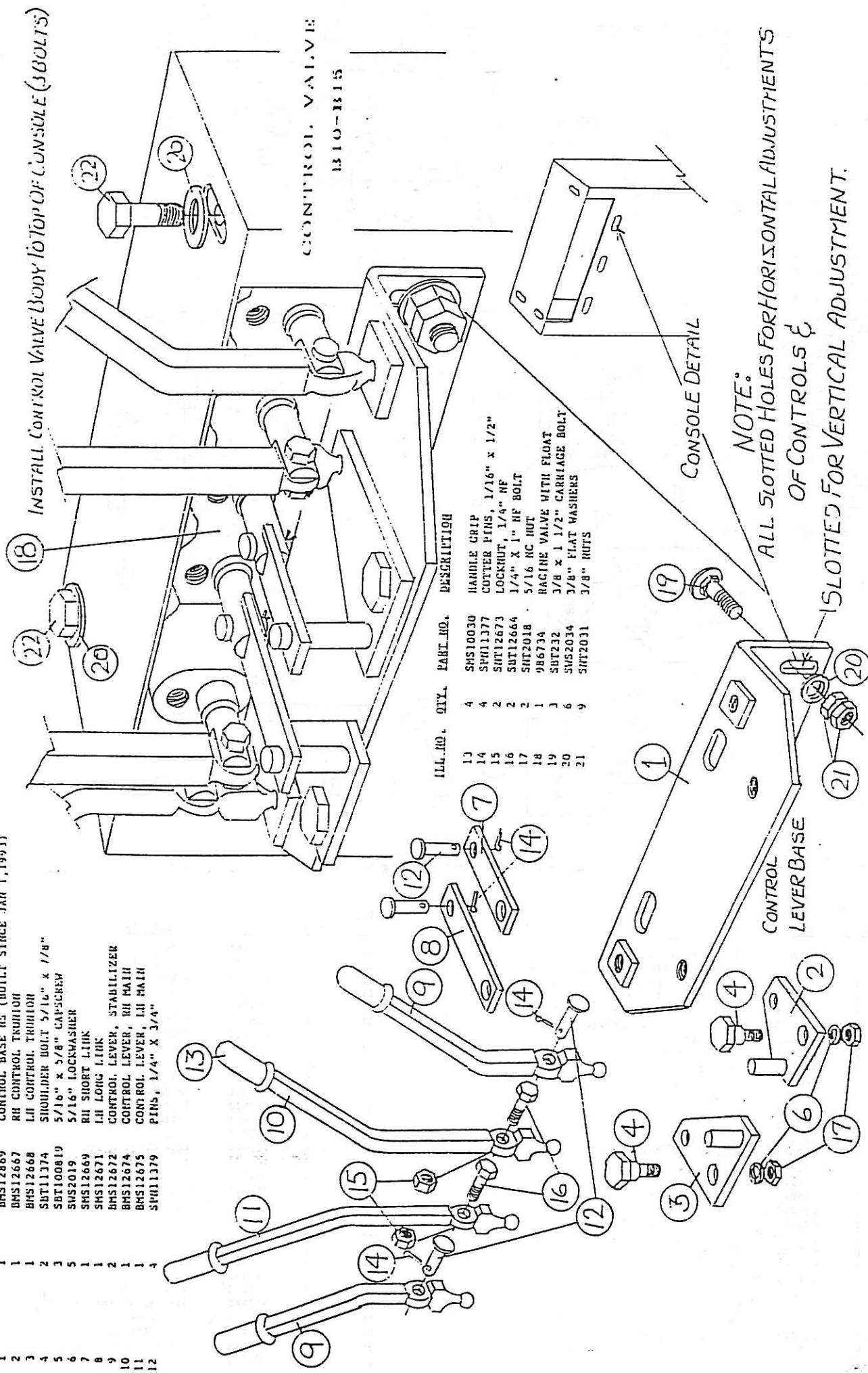
ILL. NO.	QTY.	PART NO.	DESCRIPTION	ILL. NO.	QTY.	PART NO.	DESCRIPTION
1	1	SCY12706	BARREL ASSEMBLY	8*	2	SCY1070	BACK-UP RINGS
2	1	SBT1017	CAPSCREW, 7/8"	9*	1	SCY1024	O'RING
3*	1	SCY1018	DYNA SEAL, 7/8"	11*	1	SCY1036	LOCKWIRE
4	1	SCY1020	PISTON	12*	1	SCY1025	ROD SEAL
5*	1	SCY1019	PISTON SEAL	13*	1	SCY1027	ROD WIPER
6*	1	SWS245	INTERNAL LOCKWASHER	14	1	SCY12707	ROD ASSEMBLY
7	1	SCY1023	CYLINDER HEAD		1	SCY1030	SEAL KIT



BCY 12686 Bucket Cylinder 2 1/2" x 14"

ILL. NO.	QTY.	PART NO.	DESCRIPTION	ILL. NO.	QTY.	PART NO.	DESCRIPTION
1	1	SCY12704	BARREL ASSEMBLY	8*	2	SCY1070	BACK-UP RINGS
2	1	SBT1017	CAPSCREW, 7/8"	9*	1	SCY1024	O'RING
3*	1	SCY1018	DYNA SEAL, 7/8"	11*	1	SCY1036	LOCKWIRE
4	1	SCY1020	PISTON	12*	1	SCY1025	ROD SEAL
5*	1	SCY1019	PISTON SEAL	13*	1	SCY1027	ROD WIPER
6*	1	SWS245	INTERNAL LOCKWASHER	14	1	SCY12705	ROD ASSEMBLY
7	1	SCY1023	CYLINDER HEAD		1	SCY1030	SEAL KIT

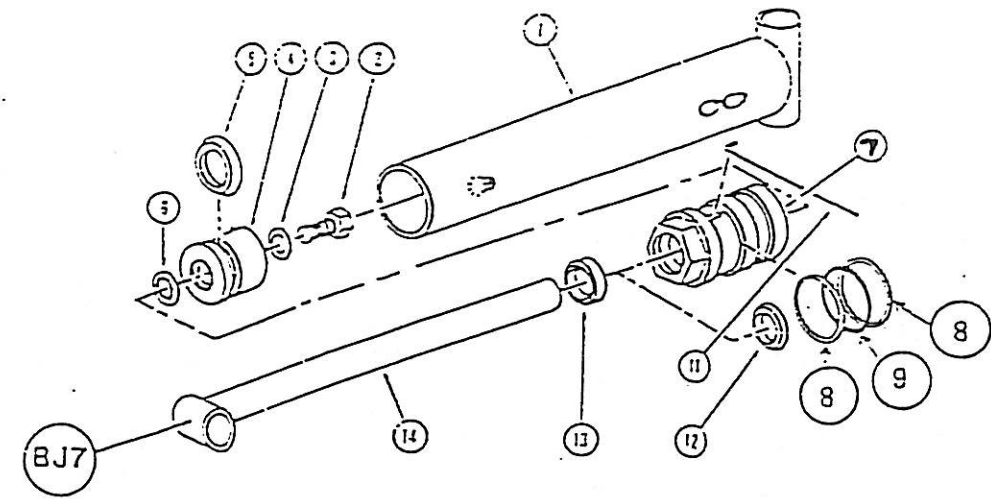
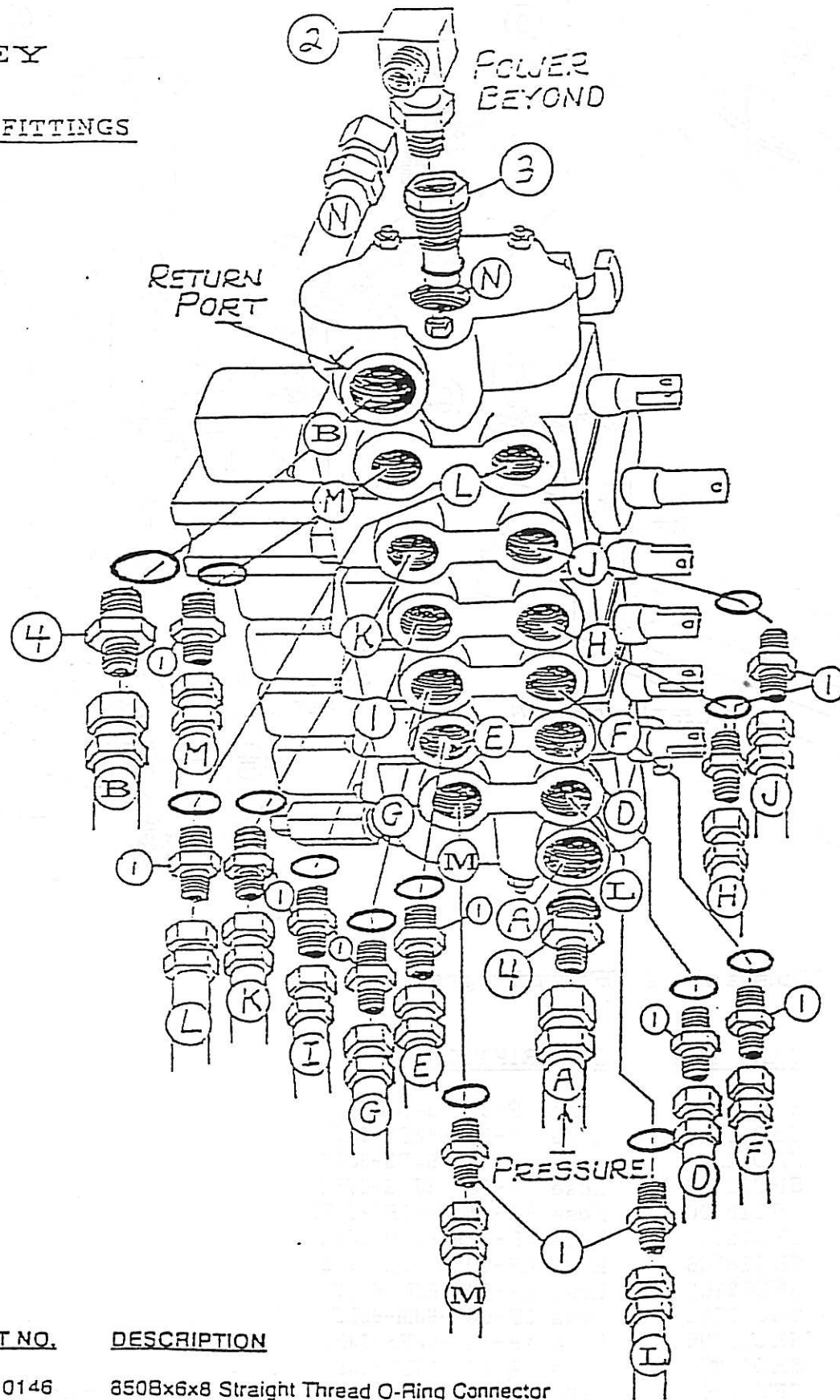
CONTROL VALVE
B10-B15



ILL. NO.	QTY.	PART NO.	DESCRIPTION
1	1	BMS12869	CONTROL BASE RE (BUILT SINCE JAN 1, 1993)
2	1	BMS12667	RH CONTROL TRUITION
3	1	BMS12668	LH CONTROL TRUITION
4	2	SBT11374	SHOULDER BOLT 5/16" x 1/8"
5	3	SWS2019	5/16" x 3/8" CAPSCREW
6	5	SWS12669	5/16" LOCKWASHER
7	1	SMS12671	RH SHORT LINK
8	1	SMS12672	LH LONG LINK
9	2	BMS12674	CONTROL LEVER, STABILIZER
10	1	BMS12674	CONTROL LEVER, RH MAIN
11	1	BMS12675	CONTROL LEVER, LH MAIN
12	1	SBT11379	PINS, 1/4" x 3/4"

ILL. NO.	QTY.	PART NO.	DESCRIPTION
13	4	SMS10030	HANDLE GRIP
14	4	SBT11377	CUTTER PINS, 1/16" x 1/2"
15	2	SHT12673	LOCKNUT, 1/4" NF
16	2	SHT12664	1/4" x 1" NF BOLT
17	2	SHT2018	5/16" NC NUT
18	1	986734	RACINE VALVE WITH FLOAT
19	3	SUT232	3/8 x 1 1/2" CARRIAGE BOLT
20	6	SMS2034	3/8" FLAT WASHERS
21	9	SHT2031	3/8" NUTS

KELLEY
B15
HOSES and FITTINGS

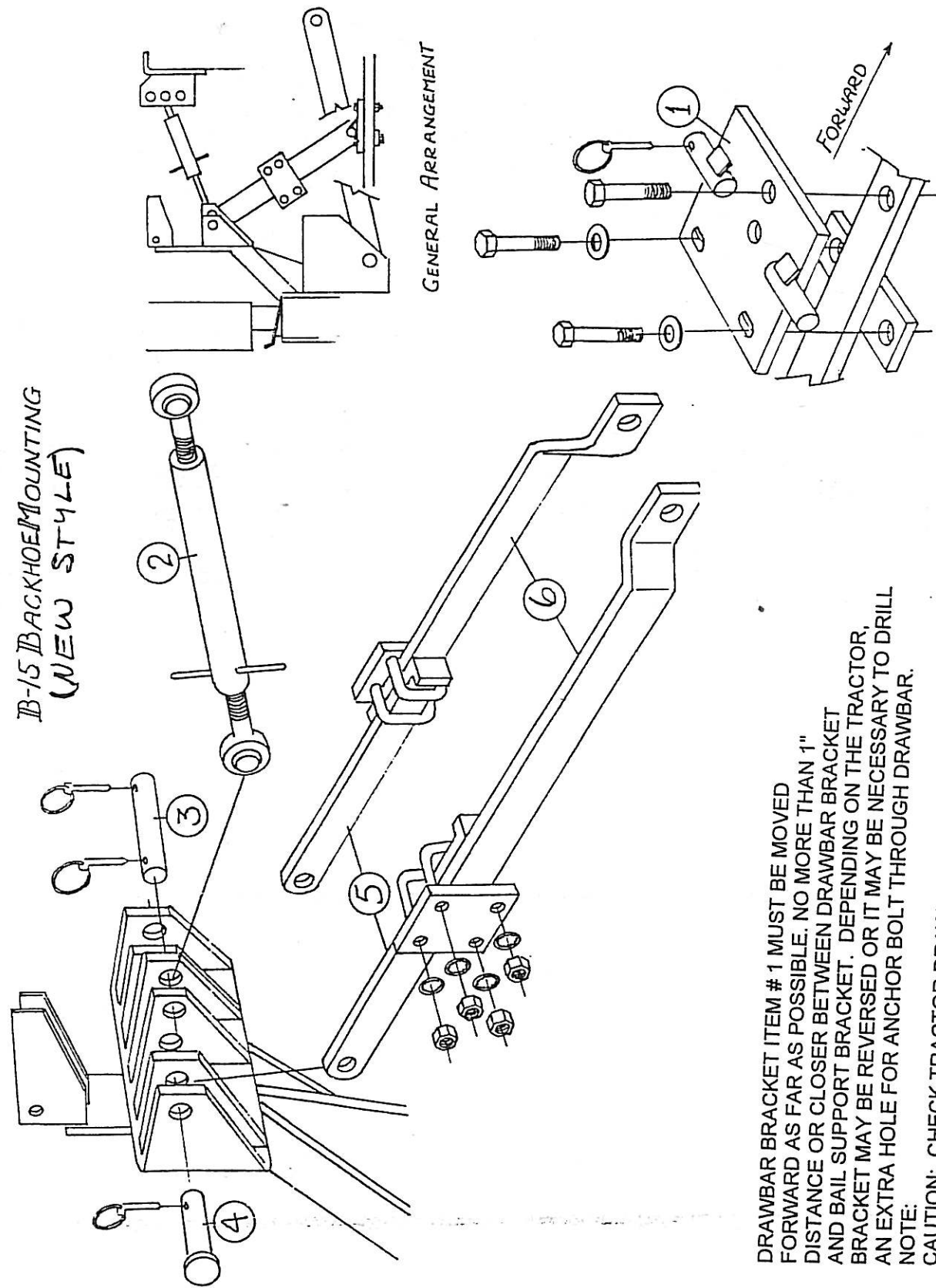


BCY 302 SWING Cylinder 2-1/2" x 10"

ILL. NO.	QTY.	PART NO.	DESCRIPTION	ILL. NO.	QTY.	PART NO.	DESCRIPTION
1	1	SCY1083	BARREL ASSEMBLY	8"	2	SCY1070	BACK-UP RINGS
2	1	SBT1017	CAPSCREW, 7/8"	9"	1	SCY1024	O'RING
3"	1	SCY1018	DYNA SEAL, 7/8"	11"	1	SCY1036	LOCKWIRE
4	1	SCY1020	PISTON	12"	1	SCY1025	ROD SEAL
5"	1	SCY1019	PISTON SEAL	13"	1	SCY1027	ROD WIPER
6"	1	SWS245	INTERNAL LOCKWASHER	14	1	SCY1082	ROD ASSEMBLY
7	1	SCY1023	CYLINDER HEAD		1	SCY1030	SEAL KIT

QTY.	PART NO.	DESCRIPTION
12	SFT10146	850Bx6x8 Straight Thread O-Ring Connector
1	SFT10066	853Bx8x10 Straight Thread O-Ring 90° Elbow
1	255049	Power Beyond Sieve
2	SFT10079	850Bx8x10 Straight Thread O-Ring Connector
0		This Hose Must be supplied by Dealer, Varies with Tractor Models

B-15 BACKHOE MOUNTING
(NEW STYLE)

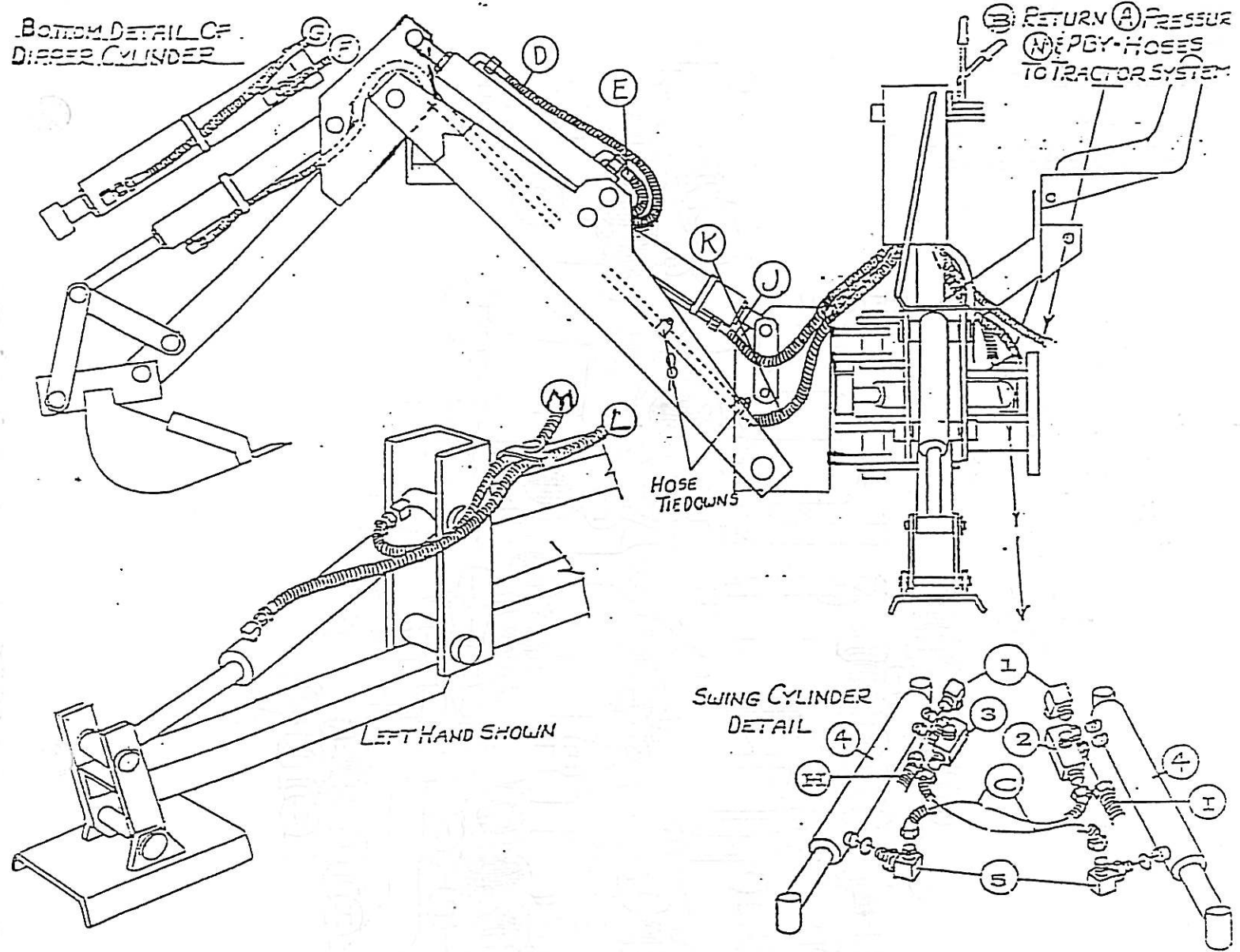


GENERAL ARRANGEMENT

DRAWBAR BRACKET ITEM # 1 MUST BE MOVED FORWARD AS FAR AS POSSIBLE. NO MORE THAN 1" DISTANCE OR CLOSER BETWEEN DRAWBAR BRACKET AND BAIL SUPPORT BRACKET. DEPENDING ON THE TRACTOR, BRACKET MAY BE REVERSED OR IT MAY BE NECESSARY TO DRILL AN EXTRA HOLE FOR ANCHOR BOLT THROUGH DRAWBAR.

NOTE:

CAUTION: CHECK TRACTOR DRAWBAR BAIL FOR STRENGTH. THERE SHOULD BE AT LEAST FOUR 14MM CAPSCREWS HOLDING DRAWBAR TO TRACTOR HOUSING. DO NOT MOUNT ON TRACTORS WITH ALUMINUM HOUSING UNLESS EXTRA BRACING OR A KELLEY FRAME KIT IS USED.



BOTTOM DETAIL OF
DIPPER CYLINDER

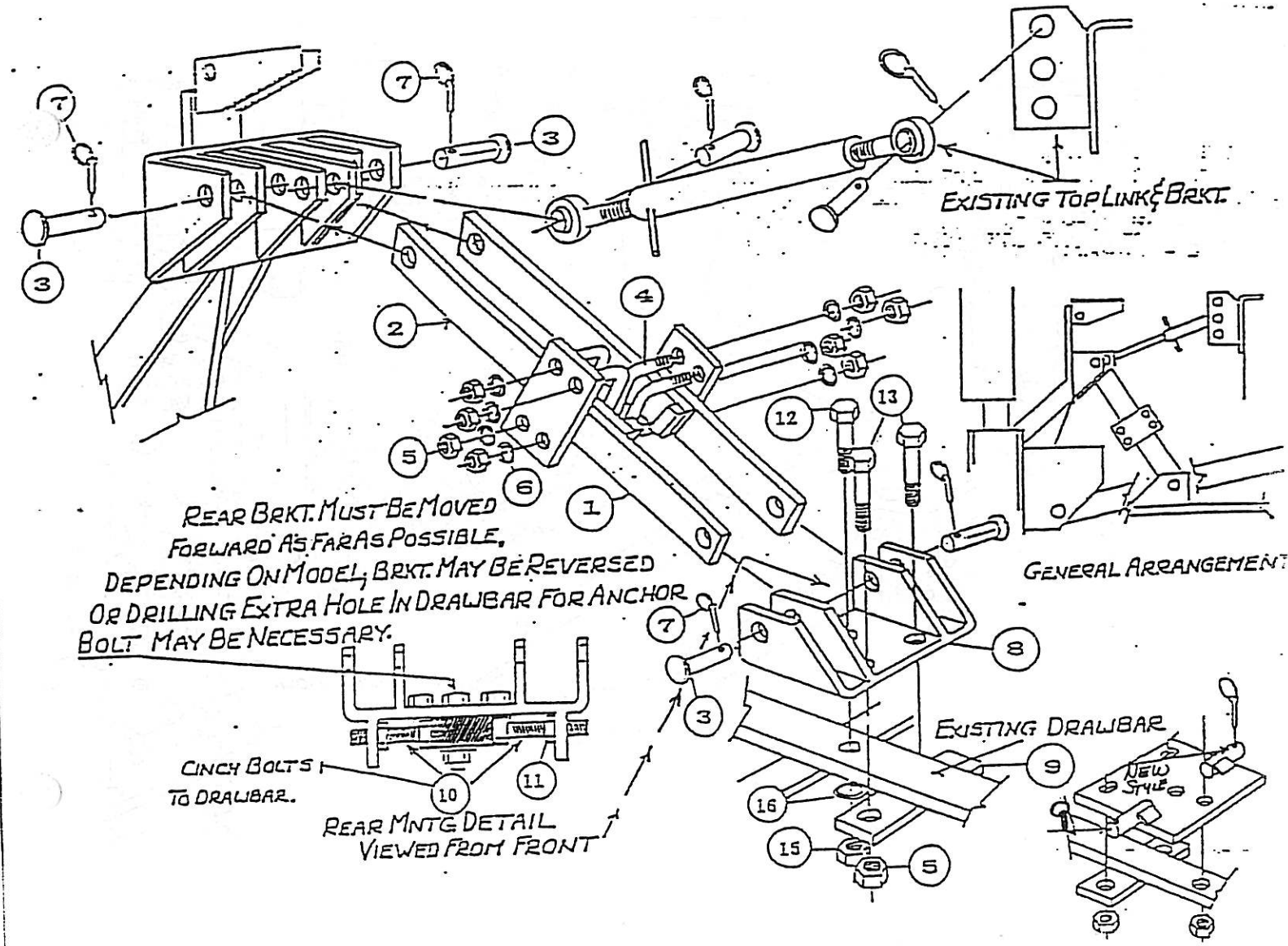
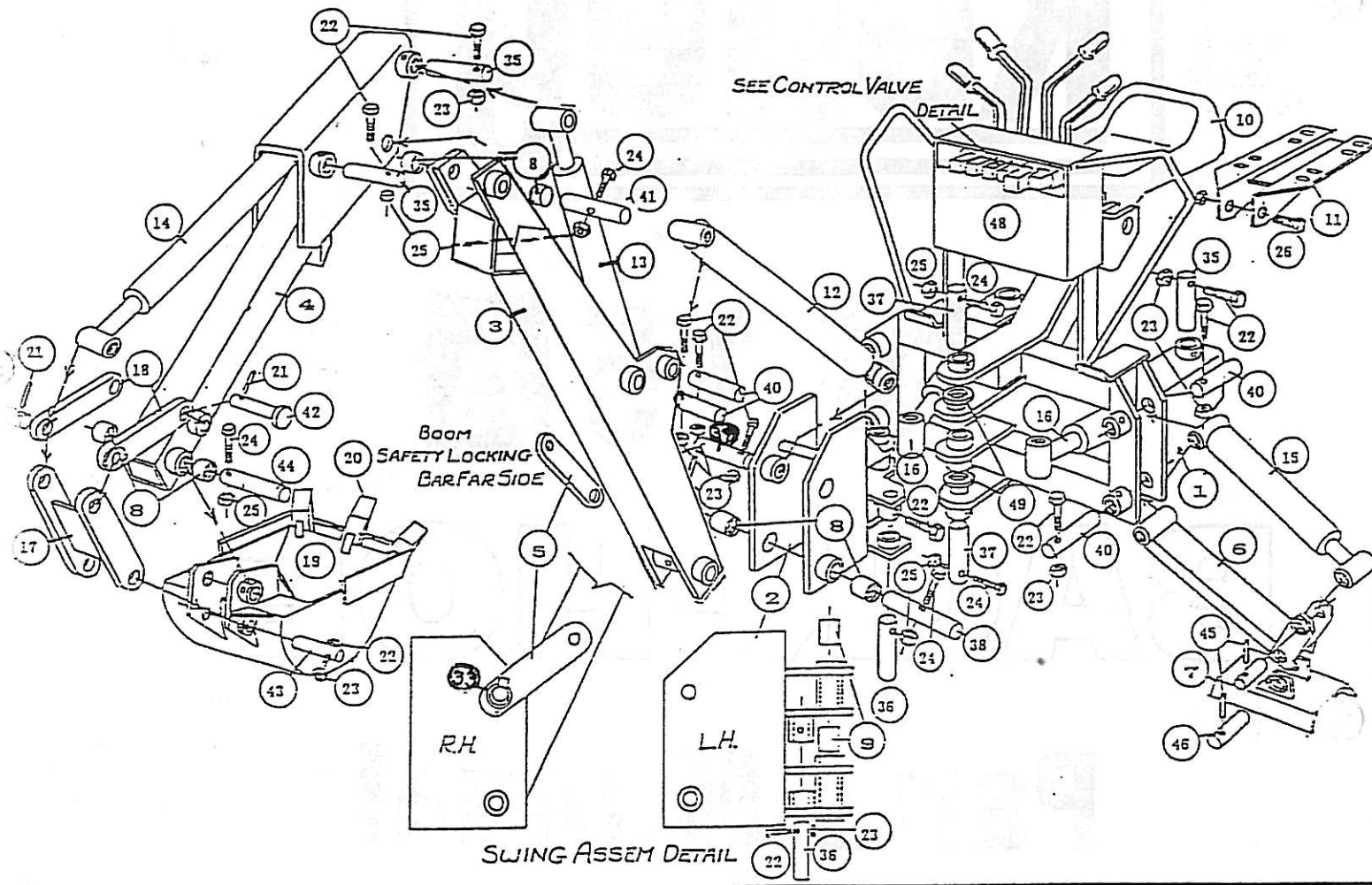
SWING CYLINDER
DETAIL

B15A Hoses @ Fittings

ILL	QTY	PART NO.	DESCRIPTION
A&B	2	SHO11123	Hose 6P-50"-6-8JFS
C	2	SHO11014	Hose 4P-16"-6JFS-6JFS
D	1	SHO12554	Hose 4P-102"-6JFS-6JFS
E	1	SHO12699	Hose 6P-85"-6JFS-6JFS
F	1	SHO12700	Hose 6P-115"-6JFS-6JFS
G	1	SHO12701	Hose 4P-119"-6JM-6JFS
H&I	2	SHO10556	Hose 4P-29"-6JFS-6JFS
J	1	SHO12702	Hose 4P-64"-6JM-6JFS
K	1	SHO12703	Hose 6P-65"-6JM-6JFS
L	2	SHO12295	Hose 4P-46"-6JFS-6JFS
M	2	SHO12557	Hose 4P-42"-6JFS-6JFS
1	2	SFT 308	863B x 6 Elbow
2	1	SFT 313	LH Manifold Cushion
3	1	SFT 314	RH Manifold Cushion
4	2	BCY 302	Swing Cylinder
5	2	SFT 312	853B x 6 Elbow

no longer available
no longer available
must replace cylinder
Borell or buy new
cushion valves
and weld on.

KELLEY B15 BACKHOE PARTS LIST



ILL	QTY	PART NO.	DESCRIPTION
1	1	BMF12676	Main Frame Weld Assy B15
2	1	BMF12677	Swing Mast Weld Assy
3	1	BMF12819	Boom Weld Assy
4	1	BMF12820	Dipper Stick Assy
5	1	BMF12680	Boom Lock
6	2	BMF11609	Stabilizer Arm (Standard)
6	2	BMF12681	Stabilizer Arm (Pickup Model)
7	2	BMF11610	Stabilizer Pad (standard)
7	2	BMF12682	Stabilizer Pad (Pickup Model)
8	6	SFT10950	Bushing, 1 1/4" x 1"
9	14	SFT10986	Bushing, 1" x 1"
10	1	BMS12510	Seat
11	1	BMS12583	Seat Base
12	1	BCY12684	BOOM Cylinder
13	1	BCY12823	DIPPER Cylinder
14	1	BCY12686	BUCKET Cylinder
15	2	BCY12687	STABILIZER Cylinder
16	2	BCY 302	SWING Cylinder
17	1	BMF12688	Bucket Link
18	2	BMF12689	Cylinder Link
19		BBK----	Bucket, 9", 12" 15", 18"
20		BBK 168	Replaceable Tooth POINT
20		BBK 167	Bucket Tooth SHANK
20		BBK 192	Bucket Tooth, SHANK and POINT
21	6	SPN10530	Roll Pin, 5/16" x 2"
22	14	SBT10795	5/16" x 2" Bolt
23	14	SNT12434	5/16" Locknut
24	4	SBT12437	3/8" x 2 1/2" Bolt

ILL	QTY	PART NO.	DESCRIPTION
25	4	SNT 2031	3/8" Nut
26	1	SBT 2050	1/2" x 3 1/2" Bolt
27	1	SNT 2060	1/2" Locknut
28	2	SBT 2021	3/8" x 3/4" Bolt
29	2	SWS 2033	3/8" Lockwasher
30	1	SBT 316	5/16" x 1 1/2" Bolt
31	4	SBT10502	Self Tapping Screw
32	2	SCL10892	Hose Hold Down Clamp
33	1	SPN11659	1/4" Lynch Pin
34	2	SPN 141	7/16" Lynch Pin
35	4	SPN10463	Pin, 1" x 5-3/4" Swing Cyl. Base, Dipper Cyl. Rod, Bucket Cyl. Base
36	2	SPN12690	Pin, 1" x 6-3/8" Swing Cyl. Rod
37	2	SPN12691	Pin, 1 1/4" x 5 1/4" Swing Pivot
38	1	SPN12692	Pin, 1 1/4" x 8-1/8" Boom Pivot
39	1	SPN12693	Pin, 1" x 7-1/8" Boom Cyl. Rod
40	6	SPN10520	Pin, 1" x 6 1/2" Boom Cyl. Base, Dipper Cyl. Base, Stabilizer
41	1	SPN12694	Pin, 1 1/4" x 7-3/8" Dipper Pivot
42	2	SPN12695	Pin, 1" x 7-1/16" Bucket Cyl. Rod. Bucket Linkage
43	1	SPN12596	Pin, 1" x 1-1/8" Bucket Link
44	1	SPN 130	Pin, 1 1/4" x 8-1/8" Bucket Pivot
45	2	SPN11603	Pin, 3/4" x 4 1/2", Stabilizer Cyl. Rod
46	2	SPN10027	Pin, 3/4" x 5 1/2", Stabilizer Pad
47	2	SPN10453	Pin, 7/8" x 4-3/8" Hitch
47	2	SWS10952	Washer, 1-1/4" I.D.
48	1	BMS12697	Valve Cover
NI	4	SPN12575	Pins, 3/4" x 2 1/2", Drawbar

KELLEY B15 BACKHOE STABILIZER MOUNT KIT PARTS LIST

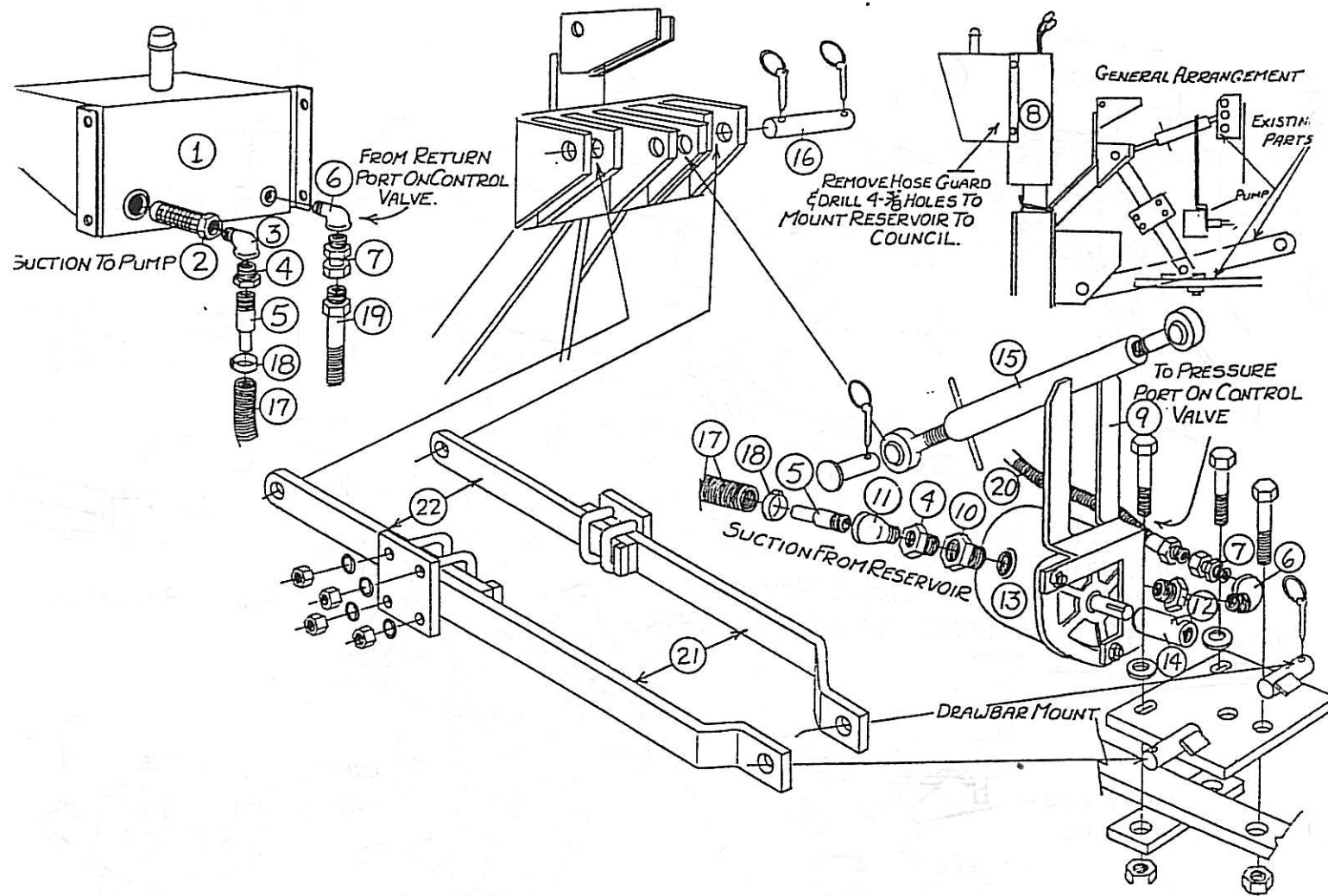
ILL	QTY	PART NO.	DESCRIPTION
1	2	BMS12712	LOWER LINK HITCHES
2	2	BMS12713	TOP LINKS
3	4	SPN12575	Pin 3/4" x 2 1/2" W/washer
4	4	SBT12716	U-Bolt, 5/8" x 2 1/2" x 2-3/4"
5	10	SNT 2086	5/8" Nuts
6	10	SWS 2088	5/8" Lockwasher
7	4	SPN11659	Lynch Pin, 1/4"
8	1	BMS12714	TRACTOR HITCH ASSY.
9	1	BMS12715	CLAMP PLATE
10	2	SBT10486	Bolt, 3/4" x 3 1/2" All Threads
11	2	SNT10584	3/4" Jam Nut
12	1	SBT10263	3/4" x 3 1/2" Bolt
13	2	SBT 2074	5/8" x 4" Bolt
14	4	SWS 2089	5/8" Flatwasher
15	1	SNT 2102	3/4" Nut
16	1	SWS 2103	3/4" Lockwasher

Kelley

B 15 A

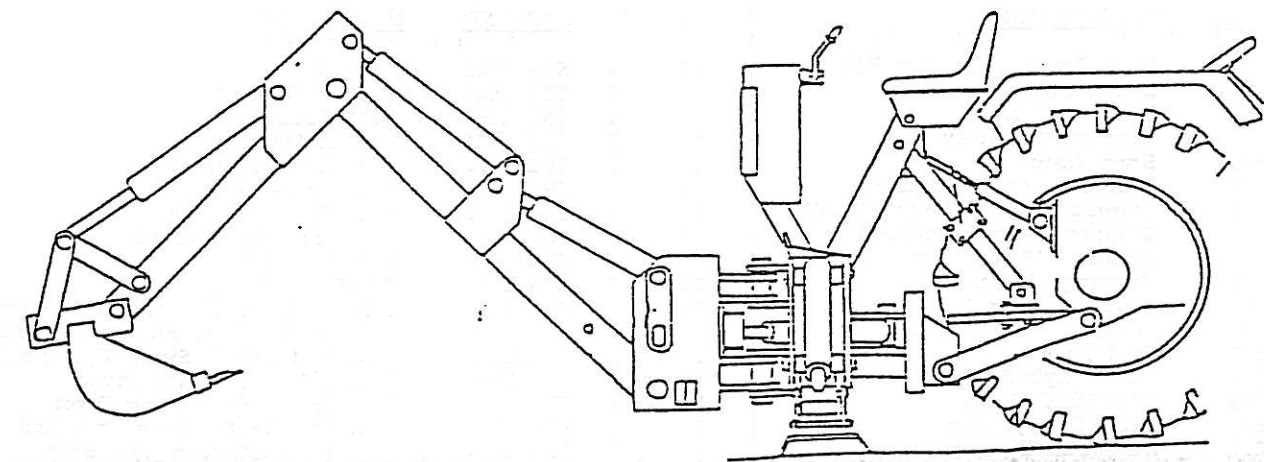
BACK-HOE

Parts Manual



B-15 HYDRAULIC PUMP SYSTEM INSTRUCTIONS

- A. Starting with the reservoir oil tank install on suction side of the reservoir in the following sequence: (#2) suction screen, (#3) 1" 90 degree street el., (#4) 1" to 3/4" reducer bushing, (#5) machined 3/4" x 4" nipple. Then install on return side of reservoir in the following sequence: (#6) 1/2" street el., (#7) 1/2" M.P.T. to 3/8" F.P.T. swivel.
- B. Remove backhoe hose guard (#8) and drill four 3/8" holes through 1/4" hose guard holes. Install the tank to the front side of the backhoe control counsel with four 5/16" x 1" capscrews, nuts and lockwashers.
- C. Install the (#9) pump torque bar to (#13) the pump as shown with the suction inlet in the position as shown. Install on the suction side of pump in the following sequence: (#10) 1-1/4" O-ring to 1" adaptor fitting, (#4) 1" to 3/4" reducer bushing, (#11) 3/4" street el., (#5) machined 3/4" x 4" nipple. Install on the pressure side of pump in the following sequence: (#12) 1" O-ring to 1/2" M.P.T., (#6) 1/2" street el., (#7) 1/2" M.P.T. to 3/8" F.P.T. swivel. Install (#14) P.T.O. pump coupler to pump using 1/4" square key. Tighten set screws on coupler.
- D. Back the tractor as close as possible to backhoe. Connect (#15) third point link from tractor to backhoe using (#16) the third point pin. Connect pump to tractor P.T.O.
- E. Connect (#17) 50' suction hose from reservoir to pump using (#18) hose clamps. Connect (#19) hose from return side of valve to reservoir. Connect (#20) from pressure port of pump to valve inlet pressure port.
- F. With hydraulic pump in operation use stabilizers, boom and dipper stick to raise backhoe to desired recommended operating height of 12" to 14" to lower frame cross tube.
- G. Connect (#21 and #22) drawbar bracing to drawbar mount according to the drawing.



KELLEY MANUFACTURING CORPORATION

61501 DREMEN HIGHWAY • MISAWAKA, INDIANA 46544-9724 • Telephone: (219) 255-4740 • FAX (219) 255-6017